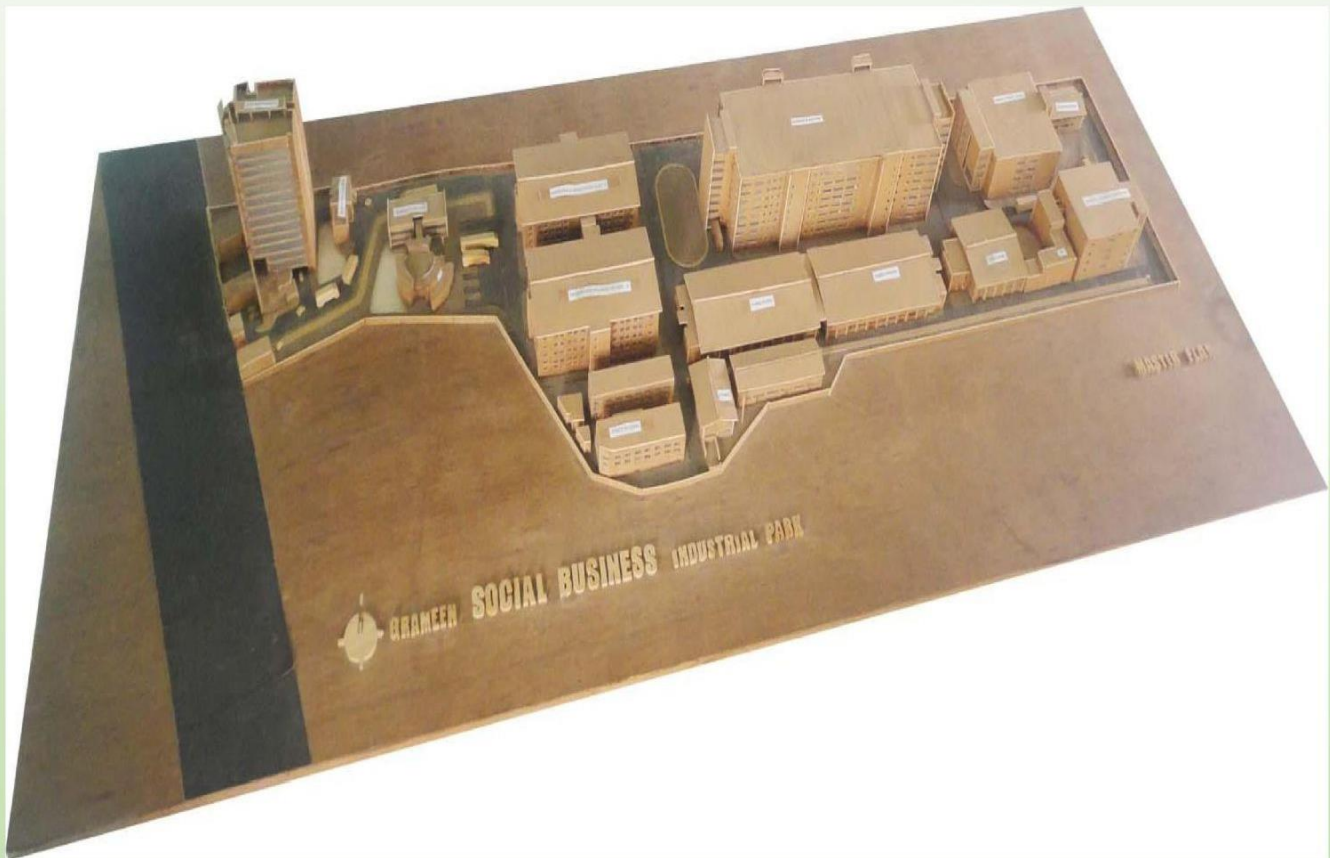




GRAMEEN FABRICS & FASHIONS LTD.

GRAMEEN INDUSTRIAL PARK

FACTORY PROFILE





FROM THE DESK OF MANAGING DIRECTOR

GRAMEEN FABRICS AND FASHIONS LTD. is a Social Business Company owned by Grameen Telecom Trust and Prof Muhammad Yunus, The Chairman of the company established GFFL to further the concept of Social Business.

GFFL was established under Bangladesh Company Act 1994 • the company is monitored by its Board of Directors. All members of the board are voluntary.

Grameen Fabrics and Fashions have three different units:

- 1. Composite Garments:** - Sequentially, the company will be sitting up an environmentally and worker friendly factories to manufacture composite knitwear. Initially we started with knitting and sewing unit with state of art machinery. The factory is situated in the Social Business Industrial Park in Gazipur. Present production capacity of knitting is 8 tons and readymade garments 40,000-45000 pieces per day for the export market. Continuously we are increasing our production capacity.
- 2. Mosquito Net Project:** - It is producing Bangladesh first long lasting impregnated mosquito net for protection against malaria, dengue and other mosquito transmitted diseases.
- 3. Sanitary Napkin Project:-** Company is producing sanitary napkin named 'SOFTY' in a partnership business with Babylon group to provide hygienic sanitary napkin at low cost for garments worker and poor ladies of Bangladesh.

Our key vision is to develop a unified corporate management system with the combination of social welfare and clean environment to extend our network to integrate customer requirement followed by the prescribed compliance regulation to ensuring service excellence. We always try to devote best professional efforts to confirm the commitment in terms of quality, quantity and on time delivery to meet the growing need of customers.

The book let describes all about the resources with a major focus on land, manpower, machinery including customers and product profiles to support the understanding of the readers. We are confident it will encourage them to give us the first choice.

We always welcome your visit in our factory premises at any time for further details





Name of the Facility	GRAMEEN FACBRICS & FASHIONS LTD.	
Facility Address	Grameen Industrial Park, Sarabo, Kashimpur, Gazipur, Bangladesh.	
Post Code	1700	
BGMEA Reg. No.	5448	Accord (RSC) ID : 11501
Business License No.	00483 / 83 / Gazipur	
Name of the Project Head. / Contact Person:	<p>NAME: Md. Mahabubul Islam Khan Designation: General Manager Phone No: +88- 01730-312463 E-mail: mahbub.islam@grameenfashion.com mahbub.islam@grameenknit.com</p> <p>NAME: Syed Monjur Morshed Designation: Asst. General Manager – Merchandising & Marketing Phone No: +88-01713171509 E-Mail: morshed@grameenknit.com morshed@grameenfashion.com</p> <p>NAME: G. M. Tariqul Islam Designation: Manager (Admin & Store) Phone No: +88-01817182168 E-mail: tariqul@grameenfashion.com</p>	
Chairman	PROFESSOR MUHAMMAD YUNUS	
Executive Vice-Chairman	MD. ASHRAFUL HASSAN	
Managing Director	MOHAMMED ANWAR HOSSAIN	
Ownership type:	100% Export Private Limited Company	
Years in Operation	2012	
Production Capacity	Fabrics:	Single Jersey/Pique : 3,000 kgs. Per Day
		Interlock : 2,000 kgs. Per Day
		Rib : 1,800 kgs. Per Day
		Collar Cuff : 2,500 sets PerDay
	Garments	T-shirt : 20,000 Pcs. Per Day
		Polo-Shirt : 15,000 Pcs. Per Day
		Jacket : 5,000 Pcs. Per Day
Major Product	All kinds of Knit items.	
Factory Certificate Status	BSCI (IN, 328835), SEDEX, ACCORD (RSC) (11501), OEKO-TEX STANDARD, GOTS, OCS, GRS,	



MANPOWER ANALYSIS

Garments Section:

Category / Section	Male	Female	Total
Cutting	119	10	129
Sewing	410	599	1009
Finishing	102	115	217
Quality	85	90	175
Heat Seal	40	-	40
Production & Floor staff	34	-	34
Merchandiser	18	01	19
Total =	808	905	1713

Sample Section:

Category/ Section	Male	Female	Total
Staff & Auto Cat Staff	2	-	2
Sample Man	25	-	25
Sample Cutter	3	-	3
Sample Iron Man	2	-	2
Sample Q. C.	2	-	2
Total =	34		34

Knitting Section:

Category/ Section	Male	Female	Total
Office Staff	11	-	11
Operator	28	-	28
Helper	8	-	8
Knitting Q.I	5	-	5
Fitter	2	-	2
Total =	54		50

Maintenance:

Category /Section	Male	Female	Total
Engineer	2	-	2
Engineer (Civil)	1	-	1
Electrician	4	-	4
Asst. Electrician	2	-	2
Plumber	2	-	2
Mechanic	10	-	10
Utility	8	-	8
Total =	29		29

Store Loader/Helper

Category/ Section	Male	Female	Total
Store Loader	65	-	65
Total =	65		65

HR, Admin & Compliance

Category/ Section	Male	Female	Total
Admin HR& Compliance	8	2	10
Cleaner/Peon	2	32	34
Total =	10	34	44

Napkin Section

Category/ Section	Male	Female	Total
Staff	1	-	1
Operator	6	16	22
Total =	7	16	23

Factory Total Manpower = 1868



PRODUCTION DETAILS

1	Factory Operations	February 2012
2	Products Manufactured Item	100% Export Oriented Composite Knit Factory
3	Production Capacity (Monthly)	85,000Dz – 90,000Dz
4	Production Capacity (Yearly)	1020,000Dz-1080,000Dz
5	Main markets (Countries)	UK, SWEDEN, ITALY, SPAIN, GERMANY, USA.
6	Main customers	New Wave, Gor Factory, SDI (Texebo), US Polo, Murray, Lidl, Payper, Lpp, Peacock

FACTORY PREMISES

Total Land Area	40 Acres
Production Area	1,61,527 Sft
Total no. of Buildings	(Building -7+ Shad -5) = 12
Number of Floors	05 Production Floor

WORKING

HOUR ANALYSIS

Working Day Per Week	06
Normal Working Hour per Day	08 hrs.
Overtime Hour	02 Hours Per Day.
Break	1 Hours
No. of Operating Shift (details)	Garments 1 Shift, Knitting 2 Shift & Security 3
Peak Season	Round the year

MISCELLANEOUS

Total No of Sewing Line	20				
No. of Machines per Line	40				
No. of Supervisor per Line	02				
Ratio of per Line QC to production workers	2				
No. of Cutting Table	06				
Length and Width of Cutting Table	64 fit & 7 fit.				
No. of Cutter & Brand	07 & K.M.				
No. of Iron	35				
No. of Fusing Machine M/C with Model No.	01	Hashima HP450C			
No. of fabric Inspection M/C with Model No.	02	JDIA , JDIA-40			
No. of Metal Detector M/C with Model No:	01				
	Section	Floor	Male	Female	Sub-total
	Garments	1st	5	8	13
		2nd	7	8	15
		3 rd.	7	8	15
	Knitting	Ground	6	2	8
	Napkin	1st	-	1	1
	Total =		29	31	60
No. of Fire Exit Route	03				
Dining Hall	02				
Dining Set capacity	500				
Day Care Centre	01				
Clinic with Doctor's and Paramedics	Yes				



FIRE FIGHTING EQUIPMENTS

No. of Fire Fighting Extinguisher	ABC	255
	CO2	115
	Foam	3
	Others	
	Total	373
Total No. of Fire Fighter	280	
Fire Training Certificate Holder	80	
First Aid Certified	32	
Drinking Water Dispenser	20	
Capacity of Drinking Water	20 ltr per Dispenser	
Notice Board	03	
Fire Bucket + Stand	50 & 12	
Hand Gloves	40	
Fire Alarm	30	
Fire Alarm Switch & Box	55	
Air Plug	35	
Smoke Detector	210	
Fire Beater	36	
Fire Hook	36	
Stretcher	25	
Fire Blanket	20	
Safety Helmet	60	
Ear Muff	22	
Lock Cutter	18	
Gong Bell	12 Set	
Emergency Exit	34	
Auto. Emergency Light	210	
Gas Mask	25	
Gas Mask (Full Head)	24	
Hose Pipe, Coupling & Nozzle Connector with Hose Box	20	
Hose Reel & Nozzle Connector with (Com. Set)	20	
First Aid Box	20	
Complain Box	12	
Manila Row	100 Ft.	
Gumboot	10 set	



MACHINES / EQUIPMENTS LIST

GARMENTS SECTION

S.L	NAME OF MACHINE	BRANDS	ORIGIN	QTY
1	Plain Machine (computer)	Juki	Japan	400
2	5 Thread Overlock	Pegasus	Japan	250
3	Flat Lock Flat Bed	Pegasus	Japan	165
4	Bar Tack	Juki	Japan	15
5	Button Stitch Computer	Juki	Japan	20
6	Button Hole M/C (Computer)	Juki	Japan	20
7	Kansai P.M.D	Kansai Special	Japan	8
8	Needle Detector Machine	Hashima	Japan	1
9	Heat Transfer Press (Auto)	Hashima,Sheth,Umisun	China	2
10	Cutting Machine	K.M	China	13
11	Rip Cutter Machine	Idea	China	7
12	Lay Coning Machine	Taking	Chain	6
13	Vacuum Iron Table	Tv-Con, Fulton	Chain	40
14	Fabric Inspection	Jdia	Chain	1
15	Iron	Velt	Koria	40
16	Snap Button	Max	China	10
17	Thread Sucker		China	1
18	Needle Drictor	Hashima		1
19	Fushing Machine	Hashima		1
Total =				1020

CIRCULAR KNITTING MACHINE

Name Of Machine	Dia	GG	Unit(Pcs)	Brand	Origin
Single Jersey/ Pique/Interlock/Etc	38"	24	02	Pailung	Taiwan
Single Jersey/ Pique/Interlock/Etc	36"	24	02	Pailung	Taiwan
Single Jersey/ Pique/Interlock/Etc	34"	24	02	Pailung	Taiwan
Single Jersey/ Pique/Interlock/Etc	32"	24	02	Pailung	Taiwan
Single Jersey/ Pique/Interlock/Etc	30"	24	03	Pailung	Taiwan
Single Jersey/ Pique/Interlock/Etc	28"	24	01	Pailung	Taiwan
Rib And Interlock	36"	18	02	Mayer & Cie	Germany
Rib And Interlock	34"	18	02	Mayer & Cie	Germany
Rib And Interlock	32"	18	02	Mayer & Cie	Germany
Rib And Interlock	30"	18	02	Mayer & Cie	Germany
Collar & Culf	80"	14	04	Pailung	Taiwan
Total =			24 Pcs		

Head Office: Grameen Bank Complex, (12th Floor), Mirpur-2, Dhaka-1216, Bangladesh.

Telephone: +88 02 9006642, E-mail: gffl@grameenfashion.com

Factory: Grameen Industrial Park, Sarabo, Kashimpur, Gazipur, Bangladesh7 | Page



DYEING SECTION

S.L	NAME OF MACHINE	MODEL	CAPACITY PER BATCH	QTY
1	Sclavos -Apollon high temperature high pressure sample dyeing machine. (Full Automation by Sclavos Sedamat SM2000 & Microwash)	HT-SFB	50 Kgs	1
2	Sclavos-Venus TM high temperature high pressure dyeing machine. (Full Automation by Sclavos Sedamat 3500 & 2nd addition tank)	HT-1	180 Kgs	1
3	Sclavos-Venus TM high temperature high pressure dyeing machine. (Full Automation by Sclavos Sedamat 3500 & 2nd addition tank)	HT-3	540 Kgs	1
4	Sclavos-Venus TM high temperature high pressure dyeing machine. (Full Automation by Sclavos Sedamat 3500 & 2nd addition tank)	VHT-4	720 Kgs	1
5	Sclavos-Venus TM atmospheric dyeing machine. (Full Automation by Sclavos Sedamat 3500 & 2nd addition tank)	AT-4	720 Kgs	1
6	Sclavos-Venus TM high temperature high pressure dyeing machine	HT-SFB	50 Kg	1
7	Sclavos Athena TM Sedamat 5000 high temperature Fabric Dying Machine	AHT-4	1000Kg	1
Total =				7

MOSQUITO NET & LABORATORY MACHINE:

S.L	NAME OF MACHINE	BRANDS	Origin	QTY
1	Stenter Machine	Ehwha	Korea	1
2	Plain Machine (computer)	Juki	Japan	0
3	Cutting Machine	K.M	China	0
4	Heat Seal	Hashima	China	1
5	Gas Chromatography	Agilent	USA	1
6	Bursting Machine	SOL Atlas	England	1
7	Water Purification	ELGA	UK	1
8	Washing Machine	Whirlpool	USA	1
9	Electronic Balance	Adventurer	Switzerland	1
10	GSM Cutter	SDL Atlas	England	1
11	Oil Extracting Machine	SDL Atlas	England	1
12	Vertex Mixer	SDL Atlas	Taiwan	1
13	Thermostatic Water Bath	HH-S	China	1
14	Ph Meter	Hanna	Romania	1
15	Relative Humidity Digital Meter	HTC-1	China	1
16	Hotplate Single	Nova	China	1
17	Refluxing Apparatus	SDL Atlas	India	1
18	Dimensional Stability Template	SDL Atlas	India	1
19	Mesh Counting Glass	SDL Atlas	India	1
20	Computer	Intel	China	2
Total =				19



NAPKIN MACHINE:

S.L	NAME OF MACHINE	BRANDS	QTY
1	Paper Clash Machine	China	1
2	Grinding Machine	China	4
3	Weight Scale	China	1
4	Dais Machine	China	3
5	Heat seal	China	2
6	Anti Bacteria Chamber	China	1
Total =			12

UTILITY MACHINE:

S.L	NAME OF MACHINE	QUANTITY	BRAND	ORIGIN	CAPACITY
1	Generator	02 Nos	Perkins	UK	800kvar
2	Compressor	02 Nos	Comp Air	Germany	90 kw
3	Compressor Dryer	02 Nos	Comp Air	Germany	5.5 Kw
4	Hot Oil Boiler	01 Nos	Daelim Royal	Korea	2500 Kg
5	Steam Boiler	01 Nos		China	100 kg
6	Ro Water	01 Nos	Local	Bangladesh	4000 L (PH)
Total =					9

Sign of Concern Authority

(NB: Please consider this profile as under developing.)



FACTORY BUILDING



MAIN GATE





CUTTING SECTION



SEWING SECTION





FINISHING SECTION



DOCTOR'S ROOM

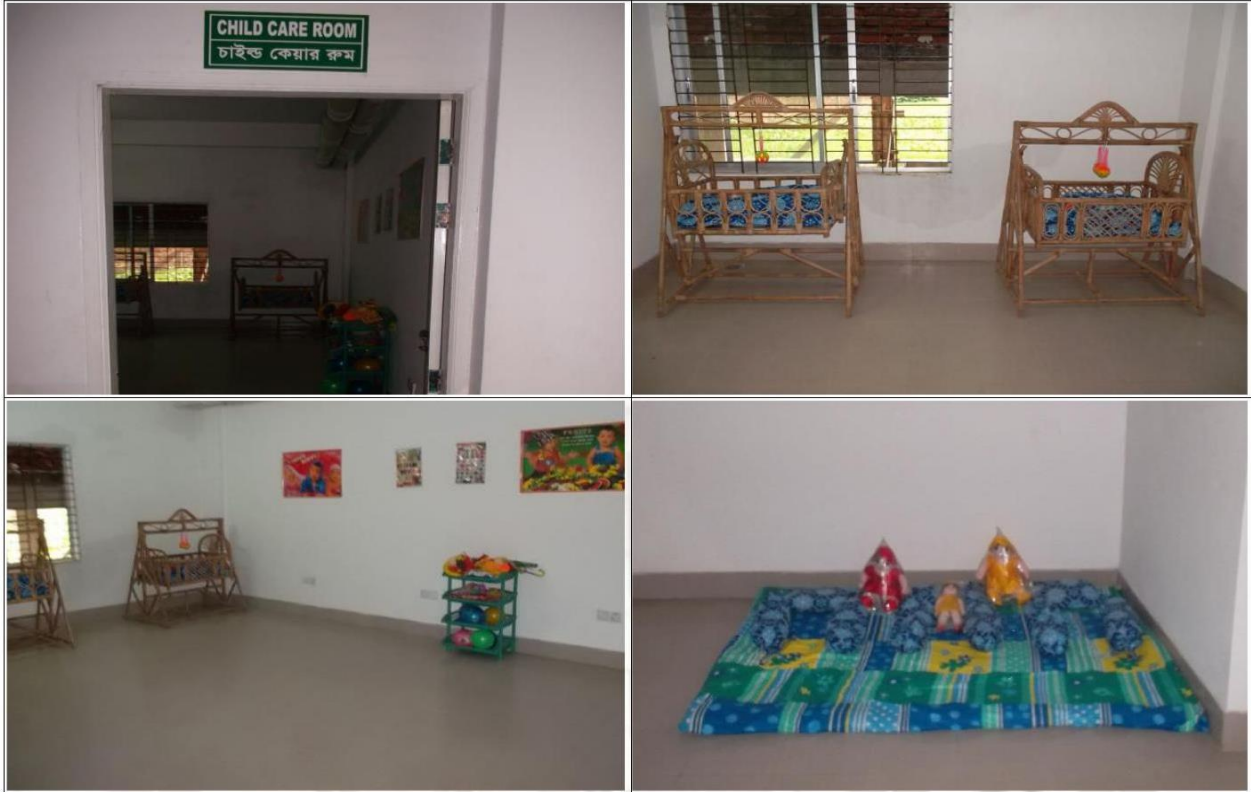


Head Office: Grameen Bank Complex, (12th Floor), Mirpur-2, Dhaka-1216, Bangladesh.

Telephone: +88 02 9006642, E-mail: gffl@grameenfashion.com

Factory: Grameen Industrial Park, Sarabo, Kashimpur, Gazipur, Bangladesh 12 | Page

CHILD CARE ROOM



FIRE SAFETY





KNITTING SECTION



MOSQUITO NET SECTION





NAPKIN SECTION



EVACUATION MAP

